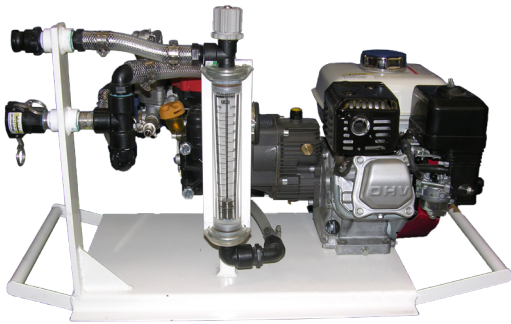


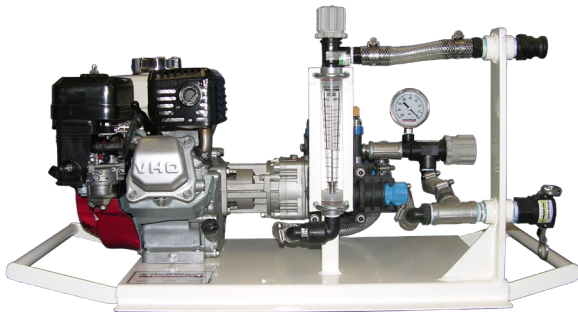
Chemical and Fertilizer Injection Pumps

Big W Sales offers a wide variety of custom made injection systems to fit most applications. Systems are supplied with a heavy-duty BWS base plate with carrying handles for easy transport. We have several pump and motor/engine combinations that are available upon request.



9910-D30W/5.5H

PART NO.	DESCRIPTION	(GPM)
9910-D30W/5.5H	5.5HP Honda° gas engine with Hypro D-30 diaphragm pump.	9



DP43GRP-4H

PART NO.	DESCRIPTION	(GPM)
DP43GRP-4H	120cc Honda° gas engine with John Blue DP-43-GRP poly diaphragm pump.	4.3

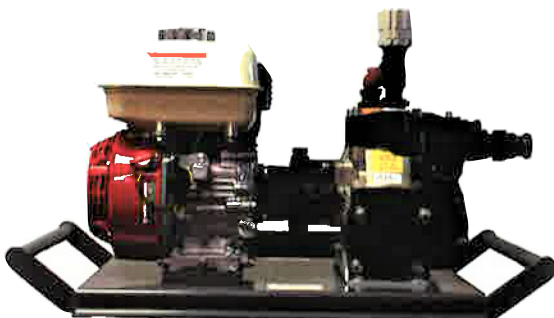
Pump guarantees total chemical resistance to harsh chemicals and fertilizers.



DP43 INJ UNIT

PART NO.	DESCRIPTION	(GPM)
DP43 INJ UNIT	3/4 HP 110 volt electric motor with a DP-43 GRP diaphragm pump.	4.3

Pump guarantees total chemical resistance to harsh chemicals and fertilizers.



DP193 INJ UNIT

PART NO.	DESCRIPTION	(GPM)
DP193 INJ UNIT	5.5HP Honda gas engine with a John Blue DP-193-PP diaphragm pump.	19.8

Piston Metering Injection Pumps



Features:

- Pumping cylinders can be mounted in parallel for large volume applications or for injection of two non-compatible products.
- A simple change of stroke length sets the precise flow to be injected
- Maximum pressure 150 psi.
- E-Z Meter Pumps with the double ball, built-in check valves provide better performance by virtually eliminating air locking. Available in 316 stainless steel or Teflon cylinders.
- The special John Blue piston cup shape provides a positive seal without the need for future adjustments. Piston cups can be changed in the field with standard tools.

POWER SOURCE	5-30 GPH	10-100 GPH	5-30 5-30 GPH	5-30 10-100 GPH	10-100 10-100 GPH
E-Z METER DELUX PUMPS					
110-220 1 ph	10620	11630	10622	10623	10633
220-440 3 ph	20620	21630	20622	20623	20633
Belt Drive	01620	01630	01622	01623	01633
Honda Engine	02620	02630	02622	02623	02633
12V DC Motors	30620	30630	30622	30623	30633



*-1 after the part number indicates pumps with Teflon cylinders, ideal for acid applications.

INJECTION PUMPS

Injection Check Valves

Features:

- 200 gph maximum capacity continuous flow (duplex).
- 100 gph maximum capacity (simplex).
- More uniform distribution of products.
- Prevents backflow, siphoning and bleed through of product.
- Easy to install and maintain.
- All Viton seals.
- 316 stainless steel spring, ball and injection tube.
- 10 psi spring.
- Bodies available in either polypropylene (CV-1310) or 316 stainless steel (115026-HS).
- NEW CV-1310-BL- Polypropylene check valve with PVC bleeder valve.



CV-1310-BL



115026-HS



CV-1310

Chemical Closed Transfer System

The Big W Sales CTS1000 Chemical Transfer System combined with the BANJO Closed Mixed Fitting System is an innovative, convenient, safe, accurate and easy to use chemical handling system.

1. The cone bottom 2.5 gallon calibrated tank clearly shows the volume of product in the tank and the manifold outlet allows for full drainage and less risk of contamination. The tank is also equipped with an air check valve that allows air to enter the system to prevent fumes from escaping.
2. The lid seals itself on the specifically molded polyethylene tank and contains a female tank adapter for attaching the Banjo closed mix fitting system tank adapter. The tank is calibrated in both liter and ounce measurements.
3. The plumbing system of the BIG W CTS1000 has a built-in cleaning nozzle to allow you to safely and easily clean the tank.
4. The plumbing system features leak free Banjo manifold polypropylene fittings.
5. The high performance 2" venturi draws all of the chemical and the harmful vapors that may be present out of the tank and away to the sprayer.
6. The free standing frame can easily be bolted to a floor or left unbolted and completely mobile.
7. The BIG W CTS1000 comes standard with safety decals on each unit.



CTS1000



CTS200D



CTS200AR

PART NO.	DESCRIPTION
CLOSED MIX FITTING SYSTEM	
CTS200D	2" TANK ADT NPT-CLOSED SYSTEM
CTS200AR	BOTTLE ADAPTER - CLOSED SYSTEM

The BANJO Closed Mix Fitting System features the following:

1. The Banjo Closed Mix Fitting System universal Bottle Adapter threads onto most conventional chemical jugs and when sealed punctures the protective foil.
2. The Banjo Closed Mix Fitting System Tank Adapter is a spring loaded, female adapter that attaches directly to the Banjo Closed Transfer System Bottle Adapter.

Chemical Closed Transfer System



DURA-METER™

Product Description:

- Impact resistant Lexan™ faceplate
- 100% moisture-sealed circuitry
- Faceplate over-molded with Santoprene and filled with gel for improved shock resistance
- Intuitive menu driven backlit display
- 2 Year Service Warranty and Maintenance Program



NEW 3" HIGH-FLOW DURA-METER™

- DP-HFM3E (EDPM)
- DP-HFM3V (Viton)
- DP-HFM3S (Silicone)

Specifications:

- (2) 9V batteries
- Operating Temp: +32 °F to +140 °F
- Flow Rate: 15 to 700 GPM
- Style: Paddlewheel
- Straight inlet required: 30"
- Straight outlet required: 15"
- Multiple plumbing options
- Wetted Materials: GF Poly, EPDM, Viton® or Silicone Seals



DURA-METER™

- DP-3000E (EDPM)
- DP-3000V (Viton)
- DP-3000S (Silicone)

Specifications:

- (4) "AAA" batteries
- Operating Temp: -10 °F to +130 °F
- Flow Rate: 2 to 22 GPM
- Max Pressure: 40 PSI
- Plumbed both for in-line & 90 degree applications
- Wetted Materials: Polypropylene, 304 Stainless Steel, Ryton, EPDM, Viton® or Silicone Seals

DURA-PUMP™



Part #	DP-4012E	12V	EDPM
	DP-4012V	12V	Viton
	DP-4015E	110V	EDPM
	DP-4015V	110V	Viton

Must specify EDPM (product # and E) or Viton (product # and V) when ordering.

Product Description:

- High-Flow with up to 15GPM free flow rate
- Self-priming diaphragm pump with internal by-pass
- Motor thermally protected from overheating
- 30 minutes duty cycle
- Suction port has 2" Male NPT and 1" Female NPT
- Pump is easily field serviceable
- Features 2 Year Service Warranty Plan
- Includes 2 Year Maintenance Program

Specifications:

- Check Valve: Internal; EPA 165.45 compliant
- Vertical Suction Lift: Self-priming to 10ft
- Amps: 12 Volt = 20ft; 110 Volt = 6.5ft
- Motor: 1/4 HP
- Amps: 12 Volt = 8.5; 110 Volt = 2.0
- Suction Port: 2" Male and 1" Female NPT thread
- Discharge Port: 1" Female NPT thread
- Wetted Materials: Polypropylene; 304 Stainless Steel;
- Santoprene (73 Shore); EPDM or Viton® Seals

5 Gallon Calibration Jug

DP-J4001



Chemical Closed Transfer System



CLOSED MIXING SYSTEMS

DURA-PUMP™ Easy Caddy

Product Description:

The Dura-Pump™ Easy Caddy can be mounted in 6 different configurations on a variety of tank/ tote and drum types. Use it mounted on top of tank or top of 55 gallon drum, on side of tank, or off the ground depending on user preference. Conversion kits are available to mount system on Monsanto and Snyder type tanks. Must specify EPDM (product # and E) or Viton® (product # and V) when ordering. Features 2 Year Maintenance Program.

Pump system available in EPDM or Viton®. Tank/ Tote sold separately.

Specifications:

- Pump: High-Flow Dura-Pump™
- Suction Hose: 1" x 5ft
- Discharge Hose: 1" x 12ft
- Nozzle: Ball valve
- Camlock: 2"
- Meter: Dura-Meter™ (optional)
- Other: All hose clamp, elbows and nipples



Side Mount

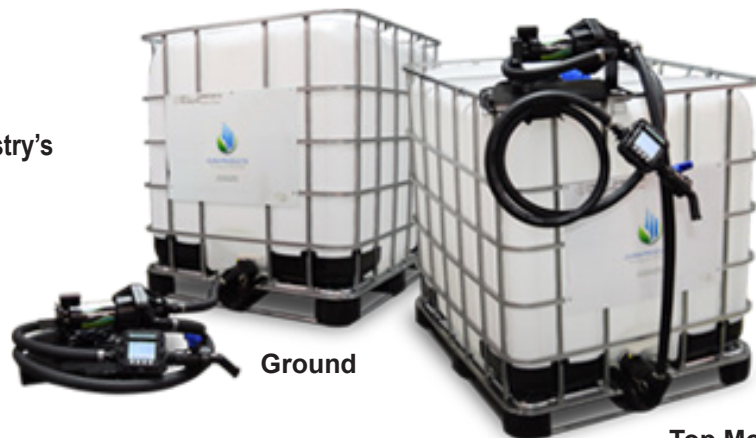
W/METER

DPEM-4312E	12V
DPEM-4312V	12V
DPEM-4315E	110V
DPEM-4315V	110V

W/O METER

DPE-4012E	12V
DPE-4012V	12V
DPE-4015E	110V
DPE-4015V	110V

The Easy Caddy system is our **top selling** and the industry's **most versatile** chemical transfer system.



Ground

Top Mount

Chemical Closed Transfer System



DURA-ABS Auto Batch System

Product Description:

The Dura Auto-Batch System is an automated option for easily and efficiently transferring fluids from one place to another. The operation is as simple as entering the amount you dispensed and pressing Start. Once activated, the pump will dispense the desired amount and shut off automatically.

The intuitive interface of the Auto-Batch System allows for the selection of manual or automatic operation with the flip of a switch. The high-flow Dura-Pump™ delivers up to a 15GPM flow rate. The system is optimal for repeatable batching. The Dura-ABS returns to the last volume amount dispensed upon completion of the cycle. The Dura-Meter™ has 100% moisture sealed circuitry fully eliminating fogging, water damage or any other damage from corrosive elements.

With an impact resistant Lexan faceplate and illuminated display, the Dura-Meter™ is made of the most robust materials while maintaining max. visibility in all conditions. Available in 12 Volt or 110 Volt, and EPDM or Viton® options. Features a 2 year warranty

Specifications:

- Pump: High-Flow Dura-Pump™
- Suction Hose: 1" x 5ft
- Discharge Hose: 1" x 12ft
- Meter: Dura-Meter™ (optional)
- Other: All hose clamp, elbows and nipples



EPDM SEALS

DPABS-4312E 12V
DPABS-4315E 110V

VITON SEALS

DPABS-4312V 12V
DPABS-4315V 110V

HOW IT WORKS

- 1 Select the volume desired
- 2 Press START
- 3 The pump will begin to dispense fluid and automatically shuts off when complete.

Chemical Closed Transfer System



DURA-PUMP™ SPECIALTY SYSTEMS

Monsanto Tank



W/METER

DPMTSM-4312 12V
DPMTSM-4315 110V

W/O METER

DPMTS-4012 12V
DPMTS-4015 110V

- Features 2 Year Maintenance Program
- Must specify EPDM (product # and E) or Viton® (product # and V) when ordering

Specifications:

- Monsanto Tank (not included)
- Pump: High-Flow Dura-Pump™
- Discharge Hose: 1" x 12ft
- Camlock: MTS; direct attach to tote
- Motor Bracket: Yes; rear
- Nozzle: Ball valve
- Meter: Dura-Meter™ (optional)
- Other: All hose clamp, elbows and nipples



Stockton, CA
800-922-7253

Fresno, CA
800-532-0253

Snyder/GEM Cap Tank



W/METER

DPGEMM-4312 12V
DPGEMM-4315 110V

W/O METER

DPGEM-4012 12V
DPGEM-4015 110V

- Features 2 Year Maintenance Program
- Must specify EPDM (product # and E) or Viton® (product # and V) when ordering

Specifications:

- Snyder Tank (not included)
- Pump: High-Flow Dura-Pump™
- Discharge Hose: 1" x 12ft
- GEM Cap Lid: Spin collar; all plumbing assembled on pump
- Motor Bracket: Yes; rear
- Downtube: 1" Telescoping
- Nozzle: Ball valve
- Meter: Dura-Meter™ (optional)
- Other: All hose clamp, elbows and nipples



Salinas, CA
844-755-2410

Yuma, AZ
800-752-2636

Chemical Closed Transfer System



DURA-PUMP™ SPECIALTY SYSTEMS



Dura-Pump™ Quick Caddy

Product Description:

- Our premium highly portable system with built-in carry handle and rugged frame
- For use in multiple mounting applications both on top of tote and ground adaptable
- Features 2 Year Maintenance Program
- Must specify EPDM (product # and E) or Viton® (product # and V) when ordering

Specifications

- Pump: High-Flow Dura-Pump™
- Suction Hose: 1" x 5ft
- Discharge Hose: 1" x 12ft
- Nozzle: Ball valve
- Camlock: 2"
- Meter: Dura-Meter™ (optional)
- Other: All hose clamp, elbows and nipples

W/METER

- DPQM-4312 12V
- DPQM-4315 110V

W/O METER

- DPQ-4012 12V
- DPQ-4015 110V



Dura-Pump™ Top Unload

Product Description:

- Top mount application with 2" NPT bung
- 1" telescoping downtube to accommodate varying tank heights
- Features 2 Year Maintenance Program
- Must specify EPDM (product # and E) or Viton® (product # and V) when ordering

Specifications

- Pump: High-Flow Dura-Pump™
- Downtube: 1" Telescoping
- Discharge Hose: 1" x 12ft
- Nozzle: Ball valve
- Meter: Dura-Meter™ (optional)
- Other: All hose clamp, elbows and nipples

W/METER

- DPTM-4312 12V
- DPTM-4315 110V

W/O METER

- DPT-4012 12V
- DPT-4015 110V



Dura-Pump™ Bottom Unload

Product Description:

- Configured to be hard mounted at bottom of tank/tote
- Features 2 Year Maintenance Program
- Must specify EPDM (product # and E) or Viton® (product # and V) when ordering

Specifications

- Pump: High-Flow Dura-Pump™
- Discharge Hose: 1" x 12ft
- Camlock: 2" direct attach to tote
- Motor Bracket: Yes; rear
- Nozzle: Ball valve
- Meter: Dura-Meter™ (optional)
- Other: All hose clamp, elbows and nipples

W/METER

- DPBM-4312 12V
- DPBM-4315 110V

W/O METER

- DPB-4012 12V
- DPB-4015 110V

Closed System Cleanload

HYPRO®

- Chemical loading system that is compliant with California Closed System Regulation
- Enclosure accommodates many container sizes, fits up to two 2.5 gallon containers
- Allows operator to re-seal partially used containers w/the original chemical container cap
- CycloRinse system provides premium chemical rinsing & meltdown of flowable powders
- ProClean rinse nozzle allows operator to triple rinse chemical containers and system enclosure without exposure to chemicals or rinsate
- System under vacuum with the use of the HYPRO Eductor so all chemicals and contents of the enclosure are drawn into the stream and system, away from the operator
- Eduction provides proper mixing of chemicals by immediately placing it into a solution concentrate
- 11mm or 16mm eductor orifice sizes for optimized performance



PART NO	DESCRIPTION	NOZZLE
HYPRO® CLOSED SYSTEM CLEANLOAD		
3377-1170	Sprayer Pump High Pressure/High Flow	11mm
3377-1171	Sprayer Pump High Pressure/High Flow	11mm
3377-1670	Transfer Pump Low Pressure/High Flow	16mm
3377-1671	Transfer Pump Low Pressure/High Flow	16mm

Cleanload Chemical Eductor

- Self-contained eduction system
- 7 gallon tank features a wide 16-inch lid holds a full 51 pound bag of dry material, and can be used to rinse larger 20-liter jugs
- Educts 7 gallons of liquid in 10 seconds and a 51 pound bag of AMS in 30 seconds
- CycloRinse™ system provides premium cleaning and meltdown of flowable powders, such as AMS, with lid open for continuous operation
- Available in three nozzle sizes designed for transfer pump (16mm), on-board sprayer (11mm), and low flow roller/ diaphragm (8mm) apps
- Polypropylene eductor features 220 Universal Flange ports
- Eduction provides proper mixing of chemicals by immediately placing it into a solution concentrate
- Extends the life of transfer pumps by educting abrasive and corrosive chemicals downstream



3376 Series

PART NO	APPLICATION	DESCRIPTION	NOZZLE SIZE	TANK SIZE	EDUCTOR ORIENTATION
HYPRO® CLEANLOAD CHEMICAL EDUCTOR					
3376-0870	Low Flow Roller/ Diaphragm Pump	High Pressure/Low Flow	08	7 Gallon (26.5 L) tank holds a full 51 pound (23.1 kg) bag of dry material and can be used to rinse large 20-liter (5.2 gal) jugs	Right
3376-0871	Low Flow Roller/ Diaphragm Pump	High Pressure/Low Flow	08		Left
3376-1170	On-Board Sprayer Pump	High Pressure/High Flow	11		Right
3376-1171	On-Board Sprayer Pump	High Pressure/High Flow	11		Left
3376-1670	Transfer Pump	Low Pressure/High Flow	16		Right
3376-1671	Transfer Pump	Low Pressure/High Flow	16		Left

Chemical Handling Systems



The Handler I

The 15 US gallon handler I is the smallest Handler and is designed primarily for direct induction of chemical into sprayers. The Handler I is available as a free standing unit and is a popular factory installed addition to some of the top sprayers on the market today. The Handler 1 also features a special venturi designed for small sprayers with capacities of less than 300 gallons. The Handler 1 does not come with the venturi bulk draw capability.

- Size (US gallons) – 15
- Size (liters) – 60
- Tank calibration units – US gallons, Imperial gallons and liters
- Fitting style – threadless manifold fittings
- Fitting connections – 2"
- Venturi size - 1-1/2" single port
- Rotacraft tank clean – not available



The Handler I

The Handler II

With a capacity of 42 US gallons and 2" or 3" connection sizes, the Handler II allows the user to batch mix everything from liquids to dry products and powders, as well as directly induct chemical into the sprayer. The Handler II comes standard with the ability to draw directly from bulk containers using the Handler double venturi. The Handler II has a standard single nozzle agitation system for mixing dry formulations and assisting in tank cleaning. It is available with or without the integrate pump and platform.

- Size (US gallons) – 42
- Size (liters) – 160
- Tank calibration units – US gallons, liters
- Fitting style – threadless manifold fittings
- Fitting connections – 2" or 3"
- Venturi size - 2" dual port
- Rotacraft tank clean – not available



The Handler II

Chemical Handling Systems



The Handler III

The Handler III is available with 2" or 3" connections. The 70 gallon capacity of this unit allows the user to batch mix everything from liquids to dry flowable and powders, as well as directly induct chemical through a venturi while the sprayer is being filled. The Handler III comes standard with the ability to draw directly from bulk containers using the Handler double venturi. The Handler III is available with or without an integrated pump and comes with the RotaCraft tank rinse nozzle to prevent contamination of products. It also has a standard single nozzle agitation system for mixing dry formulations.

- Size (US gallons) – 70
- Size (liters) – 275
- Tank calibration units – US gallons, Imperial gallons, liters
- Fitting style – threadless manifold fittings
- Fitting connections – 2" or 3"
- Venturi size - 2" dual port
- Rotacraft tank clean – included



The Handler III

The Handler IV

The Handler IV is definitely the king of the batch and induction systems on the market today. Two 2" agitators, two lids, 3" manifold fittings, full draining cone-bottomed tank, convenient forklift-ready base and containment tray...the large ground operator, the aerial applicator and the commercial user all love the versatility of the Handler IV. With a working capacity of 230 US gallons, the Handler IV allows the user to batch mix everything from liquids to dry flowables and powders. The Handler IV comes complete with all the plumbing required for recirculation with 3" lines, plus a RotoCraft tank rinse nozzle to prevent product contamination. The bottom of the Handler IV is sloped for full drainage, and a special bulkhead at the bottom of each tank ensures complete drainage.

NOTE the Handler IV does not have a venturi.

- Size (US gallons) – 230
- Size (liters) – 870
- Tank calibration units – US gallons, liters
- Fitting style – threadless manifold fittings
- Fitting connections - 3"
- Venturi size - no venturi
- Rotacraft tank clean – included

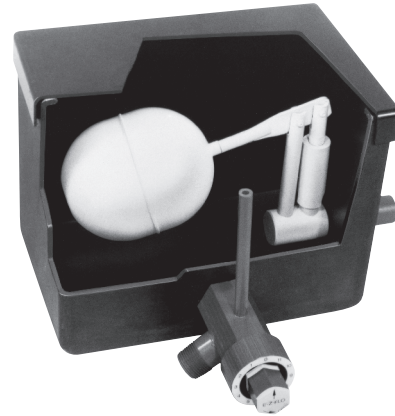


The Handler IV

Float Boxes

Float Boxes

The Big W Sales Float Valve (Battery Box) is the simple, yet effective way of applying fertilizers in your open ditch irrigation systems. Regardless of the incoming volume, the Big W Sales Battery Box maintains a constant liquid level within the float box. This gives perfect control for most types of liquid fertilizer as it enters open ditch irrigation water from either low pressures (less than 30 psi) or gravity flow.



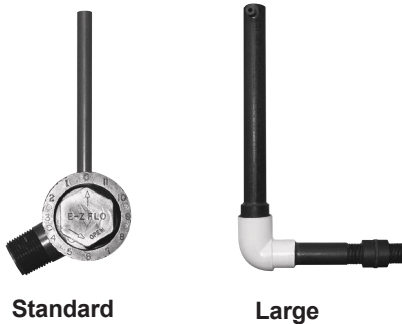
Standard Model - 560

- Gravity flow rate: 0-65 GPH
- Max control with PVC needle valve
- Inlet connection 1/2" FNPT
- Outlet: 1/2" FNPT x 3/4" MNPT
- Box Size: 2 gallons, 7" wide x 10" long x 8" high

Large Model - 570

- Gravity flow rate: 30-200 GPH
- Controls large flow rates with easily adjustable PVC valve
- Inlet connection: 3/4" Hose Barb
- Outlet: 3/4" Hose Barb
- Box size: 5 gallons, 13" wide x 17" long x 12" high

Completed Vented PVC Outlet Valve



Standard

Large

PART NO	DESCRIPTION
COMPLETED VENTED PVC OUTLET VALVE	
560-14	Standard PVC outlet valve
570-14	Large PVC outlet valve

PART NO	DESCRIPTION
FLOAT BOXES AND COVERS	
560-12	Standard 2-gallon float box
570-12	Large 5-gallon float box
560-13	Standard 2-gallon cover
570-13	Large 5-gallon cover
560-15	Label

PART NO	DESCRIPTION
INLET VALVE PARTS	
560-1	Standard PVC inlet valve and float
570-1	Large PVC inlet valve and float
560-2	Standard PVC inlet valve body
570-2	Large PVC inlet valve body
560-3	Standard Neoprene gasket
570-3	Large Neoprene gasket
560-4	Standard lock nut
570-4	Large lock nut
560-5	Standard seat for shut-off
570-5	Large seat for shut-off
560-6	Standard shut-off cup
570-6	Large shut-off cup
560-8	Standard shut-off post
570-8	Large shut-off post
560-9	Standard pin
570-9	Large pin
560-10	Standard arm for ball float
570-10	Large arm for ball float
560-11	Standard non-corrosion ball float
570-11	Large non-corrosion ball float

Flow Meters and Flow Dividers



Flow Meters

Impellicone Flow Divider for Anhydrous Ammonia

PART NO	DESCRIPTION	INLET SIZE	OUTLET SIZE
IMPELLICONE FLOW METER			
IP-1300	13 Outlet NH ₃ Flow Divider	1" NPT	1/4" NPT
IP-1800	18 Outlet NH ₃ Flow Divider	1" NPT	1/4" NPT



Flow Dividers

Features:

- 302 SS balanced spring offers superior performance and corrosion resistance.
- Exclusive Viton® lip seal is more stable and has a longer life than conventional diaphragms which may rupture during service.
- 316 SS sleeve can be easily removed for cleaning in the field plus the alignment indicator ensures that the sleeve can be removed, cleaned and replaced exactly in the same position.
- Field repairable without removing distribution lines.
- The upper needle of the piston is 316 SS, which means longer seal life. The special glass-filled Teflon lower needle offers smooth operation with minimum friction.
- Viton® O-rings are used for positive sealing for even hard to handle products.
- 316 SS body is corrosion resistant, durable and built to last a lifetime.

PART NO	DESCRIPTION	INLET SIZE	OUTLET SIZE	MAX FLOW OUTLET
FLOW DIVIDERS				
FD-1210	SS Flow Divider	3/4" FPT	1/4" FPT	2.25 GPM



Flow Monitor Systems

Features:

- Ports are standard NPT - use barb or push connect fittings for simple installation.
- End cap
- Viton O-rings
- Stainless steel retainer clips

PART NO	DESCRIPTION	INLET SIZE	OUTLET SIZE
FOR USE WITH SPRAYERS			
SMSS1	Single Flow Monitor Assembly - Spray type includes (5) 1/2" diameter balls	3/8" NPT female	3/8" NPT female
SMSS4	Set of 4 Flow Monitor Assembly - Spray type includes 4 bodies, (20) 1/2" diameter balls	1/2" NPT female	3/8" NPT female



SMSS1

In-Line Flow Meters

Features:

- Acrylic meter body
- Easy to read scales are screen printed on the meter body
- Viton O-ring seals
- Aluminum "stress ring" thread support

PART NO.	GPM	LPM	ADAPTER SIZE
FLOW METERS			
F-40375LN-8	0.1 - 1.0	0.4 - 4.0	1/2"
F-40376LN-8	0.2 - 2.0	1.0 - 7.5	1/2"
F-40377LN-8	0.3 - 3.0	1.5-11	1/2"
F-40500LN-8	1 - 5	2.0 - 20	1/2"
F-4075LN-12	1 - 10	4 - 38	3/4"
F-4075LN-16	1 - 10	4 - 38	1"
F-4100LN-12	2 - 20	8 - 80	3/4"
F-4100LN-16	2 - 20	8 - 80	1"
F-41017LN-16	1 - 17	4 - 65	1"



FLOW METERS

Electronic Digital Meter

Easy to use, describes this lightweight and compact meter with LCD readout. This aluminum housing meter is available with factory and field calibration.

Features:

- Available in gallon or litre
- Comes with 1-inch or 2-inch NPT threads
- Gallon or litre measurements available
- Use with gasoline, diesel fuel or kerosene
- Factory Calibration accuracy is ± 1.5%. Field Calibration accuracy is ± 1%
- Easy-to-read display up to 999,999. Access all functions using just two buttons
- 1-year warranty



How to Order:

113900-9500 = 0.3 to 3 GPM (1 to 10 LPM)
 113900-9501 = 3 to 50 GPM (10 to 190 LPM)

Lithium batteries for electronic digital meters

How to Order:

113520-1

Electronic Digital Meters (Chemical)

More accurate, more features. The 03 Series nylon meters are a step from our basic 01 Series meters. These meters are factory calibrated but offer field calibration too.

Features:

- Two models available, low flow and 1 inch
- Typical accuracy for Factory Calibration is ± 1.5%; for Field Calibration is ± 1%
- Powered by lithium battery for long life
- Gallon and litre measurement
- 1-year warranty



How to Order:

113900-9510 = 0.3 to 3 GPM (1 to 10 LPM)
 113900-9511 = 3 to 50 GPM (10 to 190 LPM)

Features:

- Pre calibrated
- 2-20 GPM
- Accurate to ± .2%
- Easy to read display
- Powered by AA batteries
- Comes with pocket sized calibration chart



How to Order:

825

Injectors

Features:

- NEW INTERNAL VANES are positioned to maximize injector efficiency, suction capacity, and mixing capabilities
- TROUBLE-FREE OPERATION with no moving parts
- PROVEN PERFORMANCE with years of expected service
- No electrical connections needed
- Can run dry with no problems
- Considerable cost savings versus other injection methods
- Safe to use as the chemicals are under vacuum, not pressure
- Constant injection assures UNIFORM DISTRIBUTION OF MATERIAL
- LONG PRODUCT LIFE constructed of strong, chemical-resistant PVDF (KYNAR® and HYLAR®) with a 5-year warranty or POLYPROPYLENE with a 1-year warranty.
- ISO-R (BSPT) threads available in PVDF models

PART NO	INLET & OUTLET	SUCTION PORT	
		BARB	THREAD
INJECTORS			
0283-PP	1/2"	1/4"	—
0384-PP	1/2"	1/4"	—
0484-PP	1/2"	1/4"	1/4"
0584-PP	3/4"	1/4"	1/4"
0878-PP	1"	1/2"	1/2"
1078-03-PP	1"	1/2"	1/2"
1583-APP	1-1/2"	1/2"	1/2"
1585-XPP	1-1/2"	1/2"	1/2"
2081-APP	2"	—	1-1/4"
2083-XPP	2"	—	1-1/4"



INJECTORS

Metering Valves:

The **MV-5** is a step up in metering valves. It's engineered to provide increased meter control through all valve positions. You can control flows more precisely and accurately. Its male threaded fitting offers easy installation and maintenance.

Features:

- Plug valve design
- 1/2 " male threaded fittings
- Designed for chemical feed applications.



MV-25 metering valve for 0.50" and 0.75 injectors

Features:

- Polypropylene and Teflon® valve
- Compression type connections for 1/4 " ID X 3/8 " OD

